



DRIVE DESIGN
AND TECHNICAL MANUAL

**HIGH PERFORMANCE POWERPLUS
POLYURETHANE MOULDED TIMING BELT
SLEEVE METRIC TOOTH**

**DRIVE BELT
TECHNOLOGY .**

SECTION 2.2.2 | TIMING BELTS | POLYURETHANE BELTS

DIN 7721 / ISO 13050 / IP27 RMA-MPTA

HIGH PERFORMANCE POWERPLUS POLYURETHANE MOULDED TIMING BELT SLEEVE METRIC TOOTH T2.5, T5, T10 AND AT5, AT10 AND D-T5, D-T10, D-AT5, D-AT10

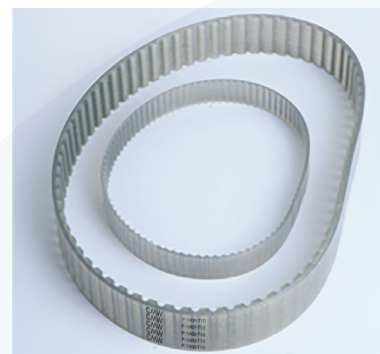
FEATURES

Produced from robust thermoset molding process it delivers extreme high breaking loads, low elongation to reach high transmission power.

Built to deliver exceptional dimensional stability, abrasion resistance, no pilling generation, exceptional rigidity.

Our precision moulded truly endless polyurethane process offers a perfect power synchronous transmission belts where clean and quiet operation is required while maintaining over time and fatigue a perfect tooth meshing. The specially-developed precision-moulding endless-PU-process ensures high pitch precision across the entire belt.

- Temperature range of -30 °C to +80 °C, can operate at a sustained peak of up to +110 °C
- Non static conductive
- Maximum oil and ozone resistance
- Heat resistant, support flex fatigue



- Meets RoHs and REACH requirements.

Our CMW Power Transmission in Power are also available with aramid or polyester cords for special requirements such as non-magnetic, water exposed and high flexible drives.

They deliver an extremely high breaking load with low elongation, resulting in high transmission power.

STRUCTURE DETAILS

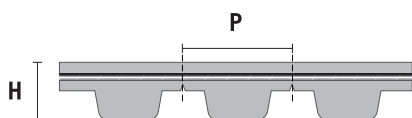
Polyurethane Body

High-grade mixed thermoset polyurethane compound (CPU) delivers a range of benefits. Exceptional dimensional stability and rigidity with excellent abrasion resistance. Provides excellent resistance to wear, fatigue and environmental conditions.

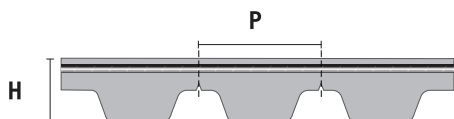
Tensile cord

Encapsulated within the polyurethane layers, steel wires form a tensile cord that delivers an extremely high breaking load, with low elongation to reach high transmission power.

Dimensions



ISO /CD 17396	T2.5	T5	T10
Pitch (mm)	2.5	5.0	10.0
Height (mm)	0.7	1.2	2.5
Angle (°) +/-1	40	40	40
Width (mm)	1.50	2.65	5.30
Foot radius (mm)	0.20	0.40	0.60
Head radius (mm)	0.20	0.40	0.60
Belt thickness (mm)	1.3	2.2	4.5
Belt weight per meter per 100mm width (Kg/m)	0.17	0.22	0.50
Min. Crimp Steel Cord (mm)	10	10	12
Min. Crimp Kevlar Cord (mm)	12	12	15
Min. Crimp Polyester Cord (mm)	12	12	15
Teeth range (min-max)	48 - 634	24 - 391	25 - 333
Pitch length (mm)	120 - 1585	120 - 1955	250 - 3300'



ISO /CD 17396	AT5	AT10
Pitch (mm)	5.0	10.0
Height (mm)	1.2	2.5
Angle (°) +/-1	50	50
Width (mm)	2.5	5.0
Foot radius (mm)	0.86	1.25
Head radius (mm)	0.40	0.40
Belt thickness (mm)	2.7	5.0
Belt weight per meter per 100mm width (Kg/m)	0.35	0.6
Min. Crimp Steel Cord (mm)	15	15
Min. Crimp Kevlar Cord (mm)	15	15
Min. Crimp Polyester Cord (mm)	15	15
Teeth range (min-max)	45 - 400	25 - 235
Pitch length (mm)	225 - 2000	250 - 2350

2.2.2 HIGH PERFORMANCE POWERPLUS POLYURETHANE MOULDED TIMING BELT SLEEVE METRIC TOOTH

Applications



Appliances/
Machinery



Food &
Beverage



Packaging



Textile

Marking

Sleeves

CMW
CMW
CMW
CMW
CMW

P-1000-T10
P-1000-T10
P-1000-T10
P-1000-T10
P-1000-T10

batch code/worker code

Cut
pieces

CMW
CMW
CMW
CMW
CMW

P-1000-T10-15-PU-S
P-1000-T10-15-PU-S
P-1000-T10-15-PU-S
P-1000-T10-15-PU-S
P-1000-T10-15-PU-S

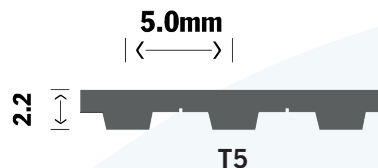
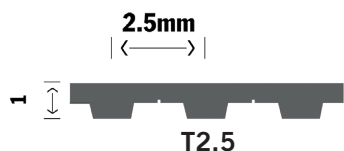
batch code/worker code

Product Codification

P-450-T5-400-PU-S means

P	450	T5	400	PU	S
Performance line	Length in mm / 450mm	Section T5 Pitch 5 mm	Width 00 mm	PU Transparent	Steel cord

2.2.2 HIGH PERFORMANCE POWERPLUS POLYURETHANE MOULDED TIMING BELT SLEEVE METRIC TOOTH



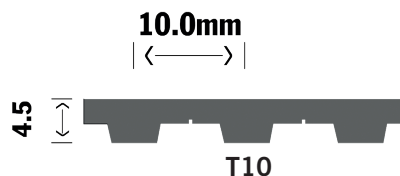
Standard Belt Range

CMW Product code	GTIN (EAN) code	Number of teeth	Pitch Length Lp (mm)
P-120-T2.5-300-PU-S	3666445017286	48	120
P-145-T2.5-200-PU-S	3666445017279	58	145
P-160-T2.5-400-PU-S	3666445017262	64	160
P-177,5-T2.5-300-PU-S	3666445017255	71	177,5
P-200-T2.5-200-PU-S	3666445017248	80	200
P-210-T2.5-200-PU-S	3666445017231	84	210
P-230-T2.5-300-PU-S	3666445017224	92	230
P-230-T2.5-300-PU-S	3666445017224	92	230
P-245-T2.5-300-PU-S	3666445017200	98	245
P-265-T2.5-300-PU-S	3666445017194	106	265
P-277,5-T2.5-300-PU-S	3666445017187	111	277,5
P-285-T2.5-300-PU-S	3666445017170	114	285
P-290-T2.5-300-PU-S	3666445017163	116	290
P-305-T2.5-300-PU-S	3666445017156	122	305
P-330-T2.5-300-PU-S	3666445017149	132	330
P-380-T2.5-300-PU-S	3666445017132	152	380
P-480-T2.5-400-PU-S	3666445017125	192	480
P-500-T2.5-300-PU-S	3666445017118	200	500
P-540-T2.5-300-PU-S	3666445017101	216	540
P-600-T2.5-300-PU-S	3666445017095	240	600
P-780-T2.5-300-PU-S	3666445017088	312	780
P-1020-T2.5-200-PU-S	3666445017071	408	1020
P-1380-T2.5-200-PU-S	3666445017064	552	1380

Standard Belt Range

CMW Product code	GTIN (EAN) code	Number of teeth	Pitch Length Lp (mm)
P-160-T5-200-PU-S	3666445017057	32	160
P-165-T5-200-PU-S	3666445017040	33	165
P-180-T5-200-PU-S	3666445017033	36	180
P-185-T5-200-PU-S	3666445017026	37	185
P-200-T5-200-PU-S	3666445017019	40	200
P-210-T5-200-PU-S	3666445017002	42	210
P-215-T5-200-PU-S	3666445016999	43	215
P-220-T5-300-PU-S	3666445016982	44	220
P-225-T5-300-PU-S	3666445016975	45	225
P-225-T5-300-PU-S	3666445015619	45	225
P-245-T5-300-PU-S	3666445016968	49	245
P-250-T5-300-PU-S	3666445016951	50	250
P-255-T5-300-PU-S	3666445016944	51	255
P-255-T5-400-PU-S	3666445015602	51	255
P-260-T5-400-PU-S	3666445016937	52	260
P-270-T5-300-PU-S	3666445016920	54	270
P-275-T5-300-PU-S	3666445016913	55	275
P-280-T5-300-PU-S	3666445016906	56	280
P-280-T5-400-PU-S	3666445015596	56	280
P-295-T5-400-PU-S	3666445016890	59	295
P-300-T5-400-PU-S	3666445016883	60	300
P-300-T5-400-PU-S	3666445016883	60	300
P-305-T5-400-PU-S	3666445016876	61	305
P-310-T5-400-PU-S	3666445016869	62	310
P-315-T5-400-PU-S	3666445016852	63	315
P-320-T5-400-PU-S	3666445016845	64	320
P-325-T5-400-PU-S	3666445016838	65	325
P-330-T5-400-PU-S	3666445016821	66	330
P-340-T5-400-PU-S	3666445016814	68	340
P-350-T5-400-PU-S	3666445016807	70	350
P-355-T5-400-PU-S	3666445016791	71	355
P-355-T5-400-PU-S	3666445016791	71	355
P-360-T5-400-PU-S	3666445016784	72	360
P-365-T5-400-PU-S	3666445016777	73	365
P-375-T5-200-PU-S	3666445016760	75	375
P-390-T5-400-PU-S	3666445016753	78	390
P-400-T5-400-PU-S	3666445016746	80	400
P-410-T5-380-PU-S	3666445016739	82	410
P-415-T5-400-PU-S	3666445015565	83	415
P-420-T5-400-PU-S	3666445016722	84	420
P-420-T5-400-PU-S	3666445016722	84	420
P-425-T5-400-PU-S	3666445016715	85	425
P-430-T5-400-PU-S	3666445016708	86	430
P-440-T5-400-PU-S	3666445016692	88	440
P-445-T5-400-PU-S	3666445016685	89	445
P-450-T5-400-PU-S	3666445016678	90	450
P-455-T5-400-PU-S	3666445016661	91	455
P-455-T5-400-PU-S	3666445016661	91	455
P-460-T5-400-PU-S	3666445016654	92	460
P-475-T5-400-PU-S	3666445016647	95	475
P-480-T5-400-PU-S	3666445016630	96	480
P-480-T5-400-PU-S	3666445016630	96	480
P-500-T5-400-PU-S	3666445016623	100	500
P-510-T5-380-PU-S	3666445016616	102	510
P-525-T5-400-PU-S	3666445016609	105	525
P-545-T5-400-PU-S	3666445016593	109	545
P-560-T5-400-PU-S	3666445016586	112	560
P-575-T5-400-PU-S	3666445016579	115	575
P-590-T5-400-PU-S	3666445016562	118	590
P-600-T5-380-PU-S	3666445016555	120	600
P-610-T5-400-PU-S	3666445015527	122	610
P-620-T5-400-PU-S	3666445016548	124	620
P-620-T5-400-PU-S	3666445016548	124	620
P-625-T5-400-PU-S	3666445016531	125	625

2.2.2 HIGH PERFORMANCE POWERPLUS POLYURETHANE MOULDED TIMING BELT SLEEVE METRIC TOOTH



Standard Belt Range

CMW Product code	GTIN (EAN) code	Number of teeth	Pitch Length Lp (mm)
P-630-T5-400-PU-S	3666445016524	126	630
P-640-T5-400-PU-S	3666445016517	128	640
P-650-T5-400-PU-S	3666445016500	130	650
P-660-T5-400-PU-S	3666445016494	132	660
P-675-T5-400-PU-S	3666445016487	135	675
P-690-T5-400-PU-S	3666445016470	138	690
P-700-T5-400-PU-S	3666445016463	140	700
P-720-T5-400-PU-S	3666445016456	144	720
P-725-T5-400-PU-S	3666445016449	145	725
P-750-T5-400-PU-S	3666445016432	150	750
P-780-T5-400-PU-S	3666445015503	156	780
P-815-T5-400-PU-S	3666445016425	163	815
P-820-T5-400-PU-S	3666445016418	164	820
P-840-T5-400-PU-S	3666445016401	168	840
P-850-T5-400-PU-S	3666445016395	170	850
P-990-T5-400-PU-S	3666445016388	198	990
P-1000-T5-401-PU-S	3666445016371	200	1000
P-1075-T5-400-PU-S	3666445016364	215	1075
P-1295-T5-400-PU-S	3666445016357	259	1295
P-1380-T5-400-PU-S	3666445016340	276	1380
P-1400-T5-400-PU-S	3666445016333	280	1400
P-1440-T5-400-PU-S	3666445016326	288	1440
P-1510-T5-400-PU-S	3666445016319	302	1510
P-1670-T5-400-PU-S	3666445016302	334	1670
P-1700-T5-400-PU-S	3666445016296	340	1700
P-2220-T5-400-PU-S	3666445015497	444	2220
P-2225-T5-400-PU-S	3666445015480	445	2225

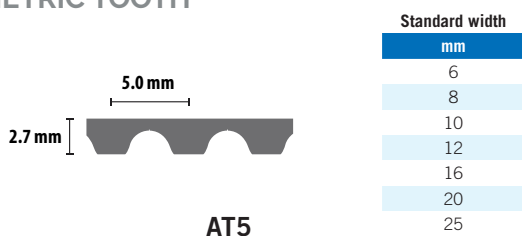
Standard Belt Range

CMW Product code	GTIN (EAN) code	Number of teeth	Pitch Length Lp (mm)
P-250-T10-300-PU-S	3666445016289	25	250
P-260-T10-300-PU-S	3666445016272	26	260
P-320-T10-400-PU-S	3666445016265	32	320
P-340-T10-400-PU-S	3666445016258	34	340
P-350-T10-400-PU-S	3666445016241	35	350
P-370-T10-400-PU-S	3666445016234	37	370
P-410-T10-400-PU-S	3666445016227	41	410
P-440-T10-400-PU-S	3666445016210	44	440
P-450-T10-400-PU-S	3666445016203	45	450
P-480-T10-400-PU-S	3666445016197	48	480
P-500-T10-400-PU-S	3666445016180	50	500
P-510-T10-400-PU-S	3666445016173	51	510
P-530-T10-400-PU-S	3666445016166	53	530
P-550-T10-400-PU-S	3666445016159	55	550
P-560-T10-400-PU-S	3666445016142	56	560
P-600-T10-400-PU-S	3666445016135	60	600
P-610-T10-400-PU-S	3666445016128	61	610
P-630-T10-400-PU-S	3666445016111	63	630
P-650-T10-400-PU-S	3666445016104	65	650
P-660-T10-400-PU-S	3666445016098	66	660
P-680-T10-400-PU-S	3666445016081	68	680
P-690-T10-400-PU-S	3666445016074	69	690
P-700-T10-400-PU-S	3666445016067	70	700
P-720-T10-400-PU-S	3666445016050	72	720
P-730-T10-400-PU-S	3666445016043	73	730
P-740-T10-400-PU-S	3666445016036	74	740
P-750-T10-400-PU-S	3666445016029	75	750
P-760-T10-400-PU-S	3666445016012	76	760
P-780-T10-400-PU-S	3666445016005	78	780
P-800-T10-400-PU-S	3666445015992	80	800
P-810-T10-400-PU-S	3666445015985	81	810
P-840-T10-400-PU-S	3666445015978	84	840
P-850-T10-400-PU-S	3666445015961	85	850
P-880-T10-400-PU-S	3666445015954	88	880
P-890-T10-400-PU-S	3666445015947	89	890
P-900-T10-400-PU-S	3666445015930	90	900
P-920-T10-400-PU-S	3666445015923	92	920
P-910-T10-400-PU-S	3666445015916	91	910
P-950-T10-400-PU-S	3666445015909	95	950
P-970-T10-400-PU-S	3666445015893	97	970
P-980-T10-400-PU-S	3666445015886	98	980
P-1000-T10-400-PU-S	3666445015879	100	1000
P-1010-T10-400-PU-S	3666445015862	101	1010
P-1020-T10-400-PU-S	3666445015855	102	1020
P-1050-T10-400-PU-S	3666445015848	105	1050
P-1080-T10-400-PU-S	3666445015831	108	1080
P-1110-T10-400-PU-S	3666445015824	111	1110
P-1140-T10-400-PU-S	3666445015817	114	1140
P-1300-T10-400-PU-S	3666445015800	130	1300
P-1440-T10-400-PU-S	3666445015794	144	1440
P-1600-T10-400-PU-S	3666445015787	160	1600
P-1850-T10-400-PU-S	3666445015770	185	1850
P-1880-T10-400-PU-S	3666445015763	188	1880
P-2250-T10-400-PU-S	3666445015756	225	2250

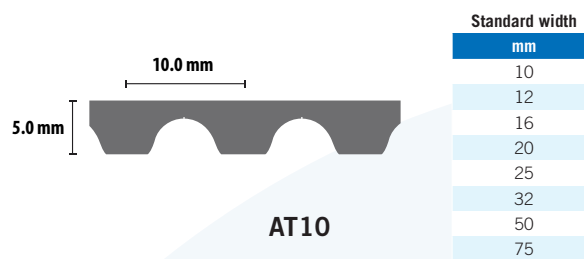
Standard Belt Range

CMW Product code	GTIN (EAN) code	Number of teeth	Pitch Length Lp (mm)
P-410-D/T10-400-PU-S	3666445015749	41	410
P-500-D/T10-400-PU-S	3666445015732	50	500
P-920-D/T10-400-PU-S	3666445015725	92	920
P-1100-D/T10-400-PU-S	3666445015718	110	1100

2.2.2 HIGH PERFORMANCE POWERPLUS POLYURETHANE MOULDED TIMING BELT SLEEVE METRIC TOOTH



AT5



AT10

Standard Belt Range

CMW Product code	GTIN (EAN) code	Number of teeth	Pitch Length Lp (mm)
P-375-AT5-400-PU-S	3666445015701	75	375
P-390-AT5-400-PU-S	3666445015695	78	390
P-410-AT5-400-PU-S	3666445015688	82	410
P-420-AT5-400-PU-S	3666445015671	84	420
P-455-AT5-400-PU-S	3666445015626	91	455
P-475-AT5-400-PU-S	3666445015664	95	475
P-600-AT5-400-PU-S	3666445015657	120	600
P-720-AT5-400-PU-S	3666445015640	144	720
P-885-AT5-400-PU-S	3666445015633	177	885

Standard Belt Range

CMW Product code	GTIN (EAN) code	Number of teeth	Pitch Length Lp (mm)
P-500-AT10-400-PU-S	3666445015473	50	500
P-560-AT10-400-PU-S	3666445015466	56	560
P-610-AT10-400-PU-S	3666445015459	61	610
P-840-AT10-400-PU-S	3666445015442	84	840
P-890-AT10-400-PU-S	3666445015435	89	890
P-980-AT10-400-PU-S	3666445015428	98	980
P-1150-AT10-400-PU-S	3666445015411	115	1150
P-1280-AT10-400-PU-S	3666445015404	128	1280
P-1320-AT10-400-PU-S	3666445015398	132	1320
P-1400-AT10-400-PU-S	3666445015381	140	1400
P-1500-AT10-400-PU-S	3666445015374	150	1500
P-1700-AT10-400-PU-S	3666445015367	170	1700
P-1800-AT10-400-PU-S	3666445015350	180	1800

POWER RATING

2.2.2 HIGH PERFORMANCE POWERPLUS POLYURETHANE MOULDED TIMING BELT SLEEVE
METRIC TOOTH

Section T2,5

BELT WIDTH (mm)	4	6	8	10	12
PULLEY WIDTH (mm)	8	10	12	14	16
BELT WEIGHT (gr/cm)	0,05	0,07	0,09	0,12	0,14

TRANSMITTABLE POWER (kW/cm of tooth in mesh)													
n\z	10	12	14	16	18	20	22	24	26	28	30	36	40
800	0,0018	0,0021	0,0025	0,0028	0,0032	0,0035	0,0039	0,0042	0,0046	0,0049	0,0053	0,0063	0,0070
600	0,0022	0,0026	0,0031	0,0035	0,0040	0,0044	0,0049	0,0053	0,0057	0,0062	0,0066	0,0079	0,0088
1000	0,0026	0,0032	0,0037	0,0042	0,0047	0,0052	0,0058	0,0063	0,0068	0,0074	0,0079	0,0095	0,0105
1400	0,0034	0,0041	0,0048	0,0055	0,0061	0,0068	0,0075	0,0082	0,0089	0,0095	0,0102	0,0123	0,0136
1500	0,0038	0,0045	0,0053	0,0060	0,0068	0,0075	0,0083	0,0090	0,0098	0,0106	0,0113	0,0136	0,0151
2000	0,0045	0,0053	0,0062	0,0067	0,0080	0,0089	0,0098	0,0107	0,0116	0,0125	0,0134	0,0160	0,0178
3000	0,0060	0,0072	0,0084	0,0096	0,0108	0,0120	0,0131	0,0143	0,0155	0,0167	0,0179	0,0215	0,0239
4000	0,0073	0,0088	0,0102	0,0117	0,0131	0,0146	0,0161	0,0175	0,0190	0,0204	0,0219	0,0263	0,0292
5000	0,0085	0,0102	0,0119	0,0136	0,0153	0,0170	0,0187	0,0203	0,0220	0,0237	0,0254	0,0305	0,0339
8000	0,0114	0,0137	0,0159	0,0182	0,0205	0,0228	0,0250	0,0273	0,0296	0,0319	0,0342	0,0410	0,0455

Section T5 DT5

BELT WIDTH (mm)	6	8	10	12	16	20	25
PULLEY WIDTH (mm)	12	13	15	17	21	25	30
BELT WEIGHT (gr/cm)	0,12	0,15	0,19	0,24	0,25	0,39	0,50

TRANSMITTABLE POWER (kW/cm of tooth in mesh)													
n\z	10	12	14	16	18	20	24	28	36	42	48	54	60
100	0,0016	0,0020	0,0023	0,0026	0,0029	0,0032	0,0039	0,0045	0,0059	0,0068	0,0077	0,0087	0,0097
200	0,0031	0,0037	0,0042	0,0049	0,0055	0,0061	0,0073	0,0086	0,0110	0,0128	0,0146	0,0165	0,0183
600	0,0078	0,0094	0,0110	0,0125	0,0141	0,0157	0,0188	0,0220	0,0282	0,0329	0,0376	0,0423	0,0470
1000	0,0119	0,0143	0,0167	0,0191	0,0214	0,0239	0,0286	0,0333	0,0428	0,0500	0,0572	0,0643	0,0715
1500	0,0165	0,0197	0,0230	0,0263	0,0296	0,0329	0,0394	0,0460	0,0591	0,0690	0,0788	0,0887	0,0986
2000	0,0205	0,0247	0,0287	0,0329	0,0369	0,0410	0,0492	0,0574	0,0739	0,0862	0,0985	0,1108	0,1231
3000	0,0278	0,0334	0,0390	0,0445	0,0500	0,0556	0,0668	0,0779	0,1001	0,1168	0,1335	0,1502	0,1669
4000	0,0343	0,0411	0,0480	0,0549	0,0617	0,0686	0,0823	0,0960	0,1235	0,1440	0,1646	0,1851	0,2057
5000	0,0405	0,0486	0,0567	0,0648	0,0729	0,0810	0,0972	0,1134	0,1458	0,1700	0,1943	0,2186	0,2429
8000	0,0581	0,0697	0,0813	0,0929	0,1044	0,1160	0,1392	0,1625	0,2089	0,2437	0,2786	0,3133	0,3481

Section T10 DT10

BELT WIDTH (mm)	10	12	16	20	25	32	50	75
PULLEY WIDTH (mm)	15	17	21	25	30	37	56	80
BELT WEIGHT (gr/cm)	0,5	0,5	0,7	0,9	1,1	1,4	2,2	3,3

TRANSMITTABLE POWER (kW/cm of tooth in mesh)													
n\z	12	14	16	18	20	22	24	26	28	30	36	48	54
100	0,0081	0,0094	0,0107	0,0121	0,0134	0,0148	0,0161	0,0175	0,0188	0,0202	0,0242	0,0322	0,0363
200	0,0149	0,0174	0,0199	0,0224	0,0248	0,0274	0,0298	0,0323	0,0348	0,0373	0,0447	0,0597	0,0671
600	0,0372	0,0434	0,0495	0,0557	0,0619	0,0681	0,0743	0,0805	0,0867	0,0929	0,1114	0,1486	0,1672
1000	0,0553	0,0645	0,0737	0,0830	0,0922	0,1013	0,1106	0,1198	0,1291	0,1382	0,1659	0,2212	0,2489
1500	0,0746	0,0870	0,0995	0,1120	0,1244	0,1368	0,1492	0,1617	0,1742	0,1866	0,2239	0,2985	0,3358
2000	0,0914	0,1066	0,1219	0,1371	0,1523	0,1675	0,1827	0,1980	0,2132	0,2284	0,2741	0,3655	0,4111
3000	0,1197	0,1396	0,1596	0,1795	0,1994	0,2194	0,2393	0,2593	0,2792	0,2992	0,3590	0,4786	0,5385
4000	0,1430	0,1669	0,1906	0,2145	0,2383	0,2622	0,2860	0,3098	0,3336	0,3575	0,4289	0,5720	0,6435
5000	0,1625	0,1896	0,2167	0,2438	0,2709	0,2980	0,3251	0,3522	0,3793	0,4064	0,4876	0,6502	0,7314
8000	0,2158	0,2518	0,2878	0,3237	0,3597	0,3957	0,4316	0,4676	0,5036	0,5396	0,6475		

POWER RATING

2.2.2 HIGH PERFORMANCE POWERPLUS POLYURETHANE MOULDED TIMING BELT SLEEVE METRIC TOOTH

Section AT5

BELT WIDTH (mm)	6	8	10	12	16	20	25
PULLEY WIDTH (mm)	12	13	15	17	21	25	30
BELT WEIGHT (gr/cm)	0,2	0,3	0,3	0,4	0,5	0,6	0,8

TRANSMITTABLE POWER (kW/cm of tooth in mesh)													
n\z	12	14	16	18	20	22	24	26	28	32	44	60	68
100	0,0038	0,0044	0,0050	0,0057	0,0063	0,0069	0,0076	0,0082	0,0088	0,0101	0,0139	0,0189	0,0214
200	0,0072	0,0085	0,0096	0,0109	0,01206	0,0132	0,0145	0,0157	0,0169	0,0193	0,0266	0,0290	0,0410
600	0,0190	0,0221	0,0254	0,0285	0,03168	0,0348	0,0380	0,0412	0,0444	0,0507	0,0697	0,0761	0,1077
1000	0,0290	0,0338	0,0386	0,0434	0,04824	0,0531	0,0579	0,0627	0,0675	0,0772	0,1061	0,1157	0,1640
1500	0,0398	0,0464	0,0530	0,0596	0,06624	0,0729	0,0795	0,0861	0,0927	0,1060	0,1457	0,1589	0,2252
2000	0,0492	0,0574	0,0657	0,0739	0,08208	0,0903	0,0985	0,1067	0,1149	0,1313	0,1805	0,1970	0,2791
3000	0,0654	0,0763	0,0873	0,0982	0,10908	0,1200	0,1309	0,1418	0,1527	0,1745	0,2399	0,2618	0,3709
4000	0,0793	0,0925	0,1057	0,1189	0,13212	0,1454	0,1586	0,1717	0,1850	0,2114	0,2907	0,3171	0,4492
5000	0,0911	0,1062	0,1214	0,1365	0,15174	0,1670	0,1821	0,1973	0,2124	0,2428	0,3338	0,3641	0,5159
8000	0,1181	0,1377	0,1574	0,1770	0,19674	0,2165	0,2361	0,2558	0,2754	0,3148	0,4328	0,4721	0,6689

Section AT10

BELT WIDTH (mm)	10	12	16	20	25	32	50	75
PULLEY WIDTH (mm)	15	17	21	25	30	37	56	80
BELT WEIGHT (gr/cm)	0,6	0,7	1,0	1,2	1,5	1,9	3,0	4,3

TRANSMITTABLE POWER (kW/cm of tooth in mesh)													
n\z	15	18	20	22	24	26	28	30	38	42	48	54	60
100	0,0194	0,0231	0,0257	0,0284	0,0309	0,0335	0,0360	0,0489	0,0489	0,0541	0,0617	0,0695	0,0772
200	0,0366	0,0439	0,0488	0,0536	0,0585	0,0635	0,0683	0,0927	0,0927	0,1024	0,1171	0,1317	0,1463
600	0,0937	0,1124	0,1249	0,1374	0,1499	0,1624	0,1749	0,2373	0,2373	0,2624	0,2998	0,3373	0,3748
1000	0,1392	0,1670	0,1856	0,2041	0,2227	0,2413	0,2598	0,3526	0,3526	0,3897	0,4454	0,5010	0,5567
1500	0,1868	0,2242	0,2491	0,2741	0,2990	0,3238	0,3488	0,4733	0,4733	0,5232	0,5979	0,6727	0,7474
2000	0,2268	0,2722	0,3024	0,3326	0,3629	0,3931	0,4234	0,5746	0,5746	0,6350	0,7258	0,8165	0,9072
3000	0,2915	0,3497	0,3886	0,4275	0,4664	0,5052	0,5441	0,7384	0,7384	0,8161	0,9327	1,0493	1,1659
4000	0,3409	0,4091	0,4545	0,5000	0,5454	0,5909	0,6363	0,8636	0,8636	0,9545	1,0908	1,2272	1,3635
5000	0,3798	0,4557	0,5063	0,5570	0,6076	0,6583	0,7088	0,9620	0,9620				
8000	0,4455	0,5346	0,5940	0,6534	0,7128	0,7722	0,8316	0,8910					



Your expert in DRIVE BELT TECHNOLOGY

CMW Power Transmission designs, manufactures and distributes rubber and polyurethane drive belts in wide variety of industrial and agricultural applications to become your favourite power transmission brand.

CMW Power Transmission SAS

21 Avenue de l'Industrie, 69960 Corbas, France
+33 4 28 29 29 82 | **email** info@cmwpt.com